

119 Ray St S
Hamilton, ON

Total Above Grade Exterior ft²

Approx Above Ground Exterior Area = 1843.83 ft²

Total Exterior ft²

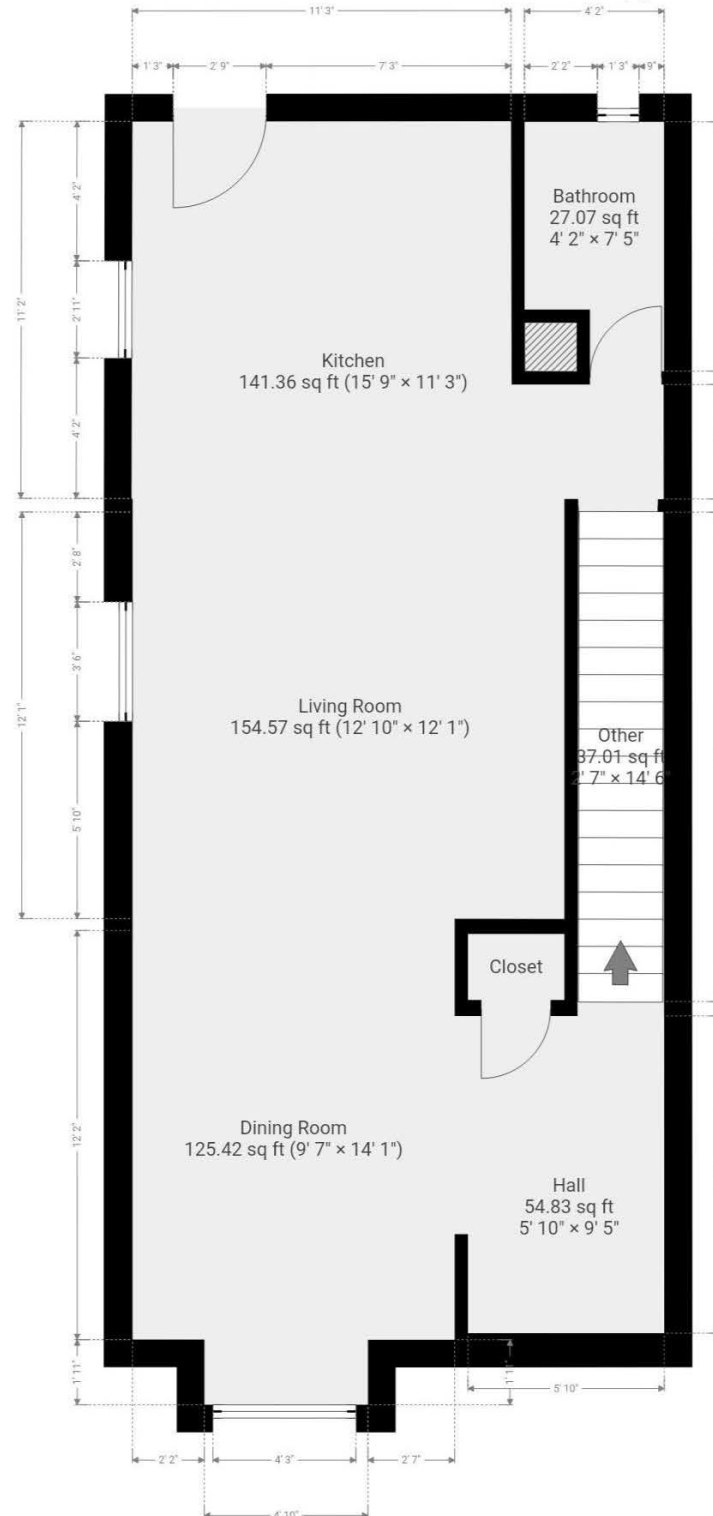
Approx Exterior Area (basement included) = 2425.86 ft²

Ground Floor
(above grade)



Approx Interior Area = 577.96 ft²

Approx Exterior Area = 669.02 ft²



119 Ray St S

Hamilton, ON

Total Above Grade Exterior ft²

Approx Above Ground Exterior Area = 1843.83 ft²

Total Exterior ft²

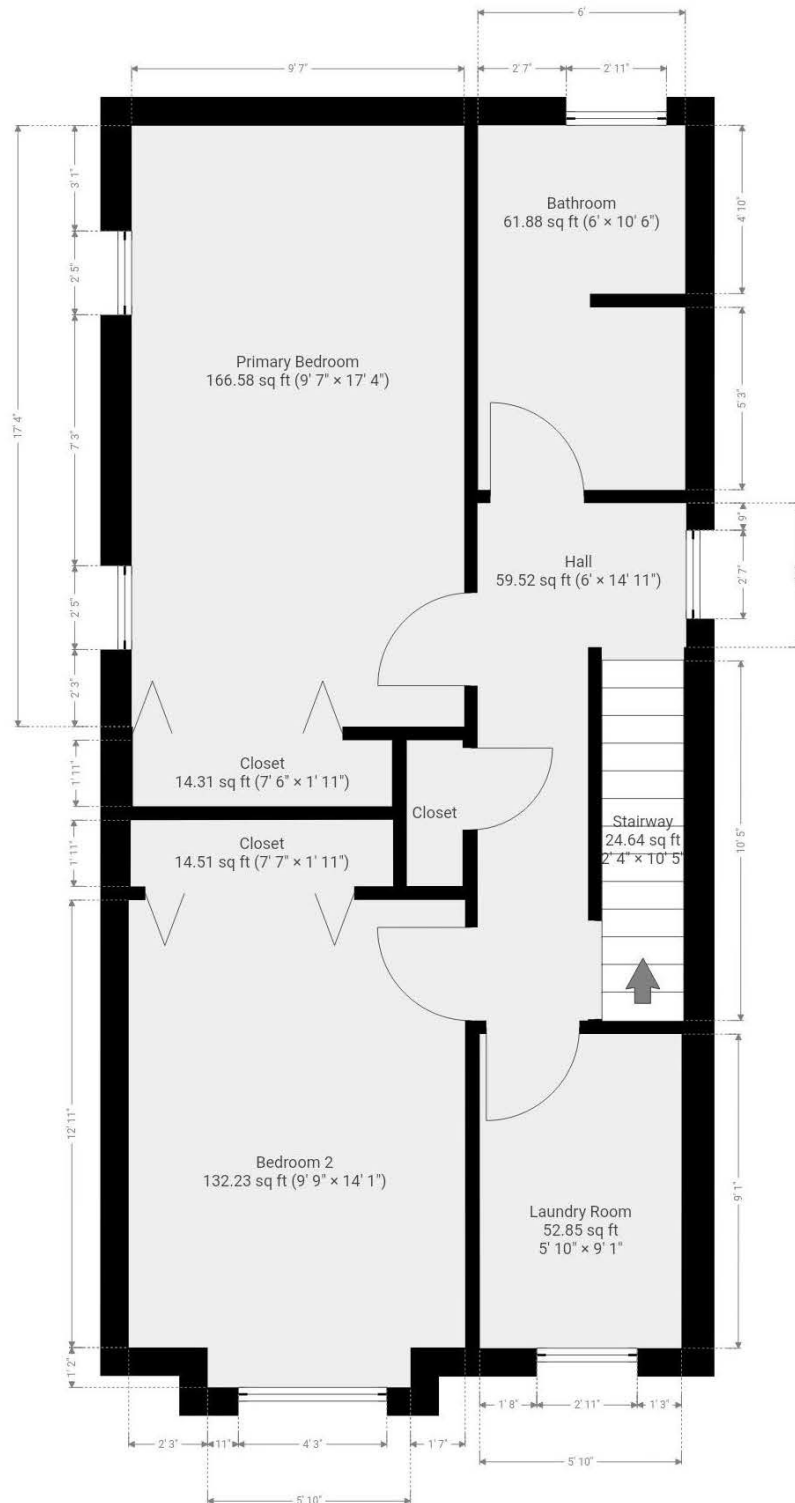
Approx Exterior Area (basement included) = 2425.86 ft²

2nd Floor (above grade)



Approx Interior Area = 570.30 ft²

Approx Exterior Area = 659.23 ft²



119 Ray St S
Hamilton, ON

Total Above Grade Exterior ft²

Approx Above Ground Exterior Area = 1843.83 ft²

Total Exterior ft²

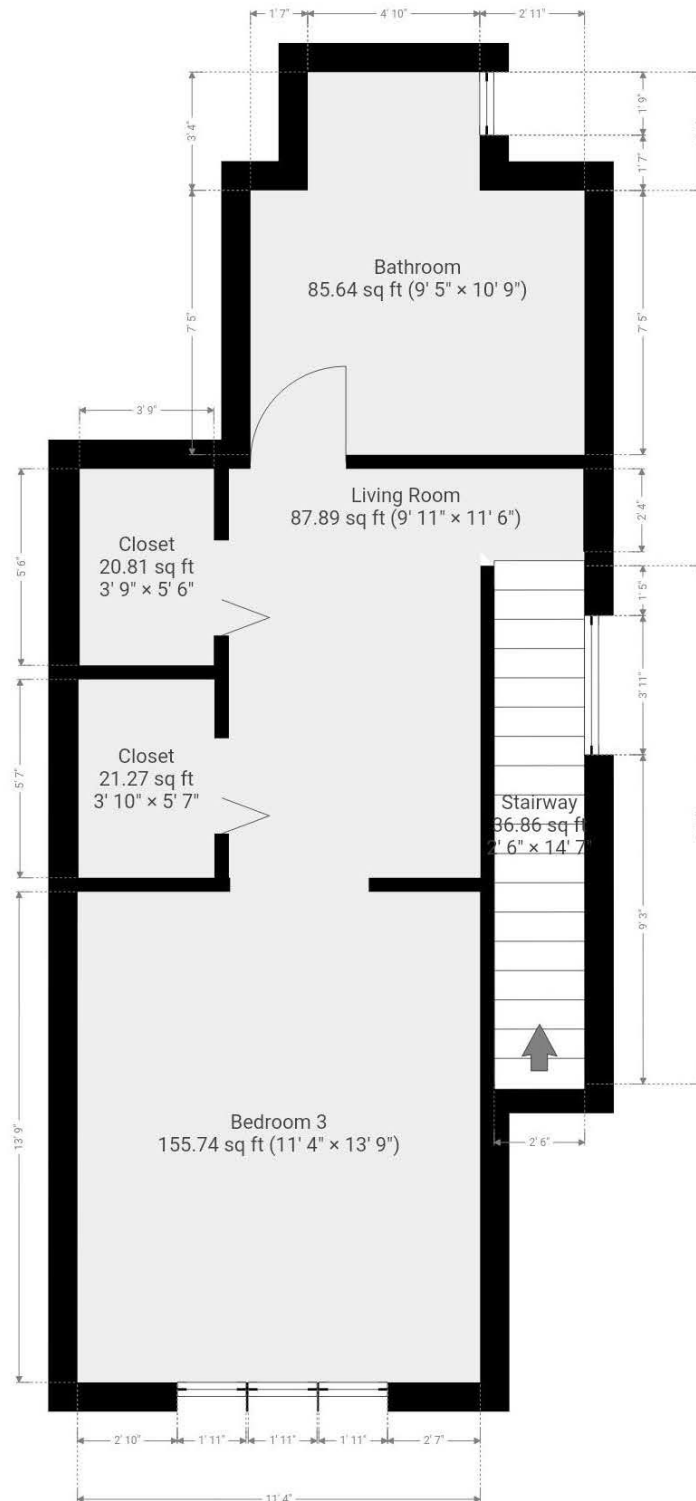
Approx Exterior Area (basement included) = 2425.86 ft²

3rd Floor
(above grade)



Approx Interior Area = 429.15 ft²

Approx Exterior Area = 515.58 ft²



119 Ray St S
Hamilton, ON

Total Above Grade Exterior ft²

Approx Above Ground Exterior Area = 1843.83 ft²

Total Exterior ft²

Approx Exterior Area (basement included) = 2425.86 ft²

Basement
(below grade)



Approx Interior Area = 498.05 ft²

Approx Exterior Area = 582.03 ft²

