

Statistics

Summary									
Floors	3	Bedrooms	2	Windows	18	Ground surface with all walls	2474.04 sq ft	Exterior perimeter	147' 11 1/4"
Rooms	25	Bathrooms	2	Doors	26	Ground surface with interior walls	2184.74 sq ft	Living area	1257.77 sq ft

1st Floor

Rooms	14	Bedroom	1	Windows	12	Ground surface with all walls	1114.77 sq ft	Exterior perimeter	141' 4 1/2"
Bathroom	1	Doors	15	Ground surface with interior walls	996.17 sq ft				

	Volume	Ground surface without walls	Walls with opening	Walls without opening	Ground perimeter	Ceiling perimeter	Surface of windows	Surface of doors
Bathroom 7' 10 1/4" x 6' 11 3/4" Ceiling height: 8' 1 3/4"	376 ft³	46.18 sq ft	241.05 sq ft	218.75 sq ft	27' 3"	29' 7 1/2"	6.20 sq ft	16.10 sq ft
Bedroom 2 12' 5 1/4" x 11' 1" Ceiling height: 8' 1/2"	974 ft³	121.16 sq ft	377.46 sq ft	329.80 sq ft	42' 6 1/2"	46' 11 1/2"	18.21 sq ft	29.45 sq ft
Closet 2' 11" x 2' 1 1/4" Ceiling height: 9' 3/4"	55 ft³	6.11 sq ft	90.79 sq ft	90.79 sq ft	10' 1/4"	10' 1/4"	0.00 sq ft	0.00 sq ft
Covered Porch 13' 1 1/4" x 7' 1 1/2" Ceiling height: 9' 3/4"	846 ft³	93.39 sq ft	366.38 sq ft	266.26 sq ft	32' 10"	40' 5 1/2"	46.84 sq ft	53.28 sq ft
Dining Room 9' 4 1/4" x 9' 11 1/4" Ceiling height: 8' 3/4"	732 ft³	90.80 sq ft	310.33 sq ft	263.44 sq ft	23' 10 3/4"	38' 5 3/4"	12.46 sq ft	34.43 sq ft

1st Floor

	Volume	Ground surface without walls	Walls with opening	Walls without opening	Ground perimeter	Ceiling perimeter	Surface of windows	Surface of doors
Hall 6' 4 3/4" x 3' 7 3/4" Ceiling height: 9' 3/4"	211 ft ³	23.31 sq ft	181.85 sq ft	127.06 sq ft	12' 7 1/4"	20' 1"	4.69 sq ft	50.09 sq ft
Hall 11' 3 3/4" x 4' 1 1/2" Ceiling height: 9' 3/4"	422 ft ³	46.57 sq ft	279.52 sq ft	207.68 sq ft	24' 9 1/2"	30' 10 1/2"	31.16 sq ft	40.68 sq ft
Hall 6' 1/2" x 10' Ceiling height: 9' 3/4"	484 ft ³	53.49 sq ft	276.57 sq ft	225.43 sq ft	22' 9 1/2"	30' 6 1/2"	0.00 sq ft	51.13 sq ft
Kitchen 12' 5 1/4" x 12' 4" Ceiling height: 8' 3/4"	998 ft ³	123.76 sq ft	399.30 sq ft	371.70 sq ft	37' 5"	49' 6 1/4"	9.43 sq ft	18.16 sq ft
Living Room 11' 4" x 13' 11 3/4" Ceiling height: 9' 3/4"	1408 ft ³	155.44 sq ft	445.62 sq ft	394.67 sq ft	43' 5 1/4"	49' 2 1/2"	12.27 sq ft	38.69 sq ft
Other 2' 8" x 2' 5 1/4" Ceiling height: 9' 3/4"	59 ft ³	6.46 sq ft	92.16 sq ft	78.19 sq ft	8' 3/4"	10' 2"	0.00 sq ft	13.97 sq ft
Other 3' 3/4" x 2' 1/2" Ceiling height: 9' 3/4"	57 ft ³	6.30 sq ft	92.73 sq ft	92.73 sq ft	10' 3"	10' 3"	0.00 sq ft	0.00 sq ft
Other 5' 5" x 6' 2 1/4" Ceiling height: 9' 3/4"	221 ft ³	24.42 sq ft	210.22 sq ft	174.49 sq ft	17' 9 3/4"	23' 2 1/2"	0.00 sq ft	35.73 sq ft
Primary Bedroom 11' 4 1/4" x 12' 2 3/4" Ceiling height: 8' 1/2"	1116 ft ³	138.72 sq ft	379.33 sq ft	328.67 sq ft	42' 6 1/4"	47' 1 3/4"	19.99 sq ft	30.68 sq ft

2nd Floor

Rooms	1	Bedroom	0	Windows	0	Ground surface with all walls	386.88 sq ft	Exterior perimeter	75' 4 1/4"
Bathroom	0	Doors	0			Ground surface with interior walls	322.38 sq ft		

	Volume	Ground surface without walls	Walls with opening	Walls without opening	Ground perimeter	Ceiling perimeter	Surface of windows	Surface of doors
Attic / Loft 13' 1 3/4" x 24' 6 1/2" Ceiling height: 8'	2582 ft³	322.50 sq ft	603.35 sq ft	603.35 sq ft	75' 4 1/2"	75' 4 1/2"	0.00 sq ft	0.00 sq ft

Basement • Level 1

Rooms	10	Bedroom	1	Windows	6	Ground surface with all walls	972.39 sq ft	Exterior perimeter	129' 7"
Bathroom	1	Doors	11			Ground surface with interior walls	866.19 sq ft		

	Volume	Ground surface without walls	Walls with opening	Walls without opening	Ground perimeter	Ceiling perimeter	Surface of windows	Surface of doors
Bathroom 5' 7" x 6' 5 3/4" Ceiling height: 6' 9"	244 ft³	36.16 sq ft	162.63 sq ft	148.37 sq ft	21' 11 1/4"	24' 1 1/2"	0.00 sq ft	14.26 sq ft
Bedroom 3 10' 8 1/2" x 10' 3" Ceiling height: 6' 9 1/2"	580 ft³	85.45 sq ft	284.72 sq ft	220.44 sq ft	32' 10 3/4"	41' 11"	5.88 sq ft	58.40 sq ft
Closet 2' x 5' 9 1/2" Ceiling height: 8'	93 ft³	11.56 sq ft	124.65 sq ft	95.74 sq ft	11' 3"	15' 6 3/4"	0.00 sq ft	28.92 sq ft

Basement • Level 1

	Volume	Ground surface without walls	Walls with opening	Walls without opening	Ground perimeter	Ceiling perimeter	Surface of windows	Surface of doors
Cellar 5' 3/4" x 2' 9 1/4" Ceiling height: 8'	112 ft³	14.01 sq ft	125.30 sq ft	108.40 sq ft	13' 7 1/2"	15' 7 3/4"	3.88 sq ft	13.02 sq ft
Family Room 23' 3 1/4" x 26' 6 3/4" Ceiling height: 6' 1/2"	3165 ft³	524.23 sq ft	601.54 sq ft	512.15 sq ft	89' 7"	99' 7 3/4"	23.44 sq ft	65.95 sq ft
Closet 6' 6 1/2" x 1' 7 3/4" Ceiling height: 8'	86 ft³	10.71 sq ft	130.86 sq ft	104.39 sq ft	12' 4 1/2"	16' 4 1/4"	0.00 sq ft	26.47 sq ft
Furnace Room 6' 3" x 2' 10 1/2" Ceiling height: 8'	143 ft³	17.87 sq ft	145.76 sq ft	117.13 sq ft	13' 7 1/2"	18' 2 1/2"	0.00 sq ft	28.64 sq ft
Hall 4' 8" x 6' 1 1/2" Ceiling height: 8'	229 ft³	28.65 sq ft	172.96 sq ft	90.38 sq ft	9' 3 1/4"	21' 7 1/4"	0.00 sq ft	82.59 sq ft
Laundry Room 7' 5 1/2" x 9' 5" Ceiling height: 6' 10"	453 ft³	66.28 sq ft	230.82 sq ft	164.02 sq ft	23' 11 3/4"	33' 9"	6.13 sq ft	60.67 sq ft
Storage 5' 10" x 5' 11 1/4" Ceiling height: 8'	277 ft³	34.63 sq ft	188.45 sq ft	153.85 sq ft	18' 2"	23' 6 1/2"	0.00 sq ft	34.60 sq ft

Appliances

Dishwasher	1
Washer	2
2 Door refrigerator	1
Oven	1

Doors

Double Folding Door	2
Folding Door	2
French Door	1
Glass Door	1
Hinged Door	12
Opening	8

Kitchen Cabinets (24")

Kitchen Counter	5
-----------------	---

Plumbing

Toilet	2
Rectangular shower	1
Bathtub	1
Rectangular sink (wall mounted)	4
Single Sink	1

Structural

Railing	2
Staircase	5
Stairs	1

Windows

Fixed Window	6
French Window	7

Windows

Hung Window	2
Sliding Window	3

134 Craigroyston Rd
Hamilton, ON

Total Above Grade Exterior ft²

Approx Above Ground Exterior Area = 1408.26 ft²

Total Exterior ft²

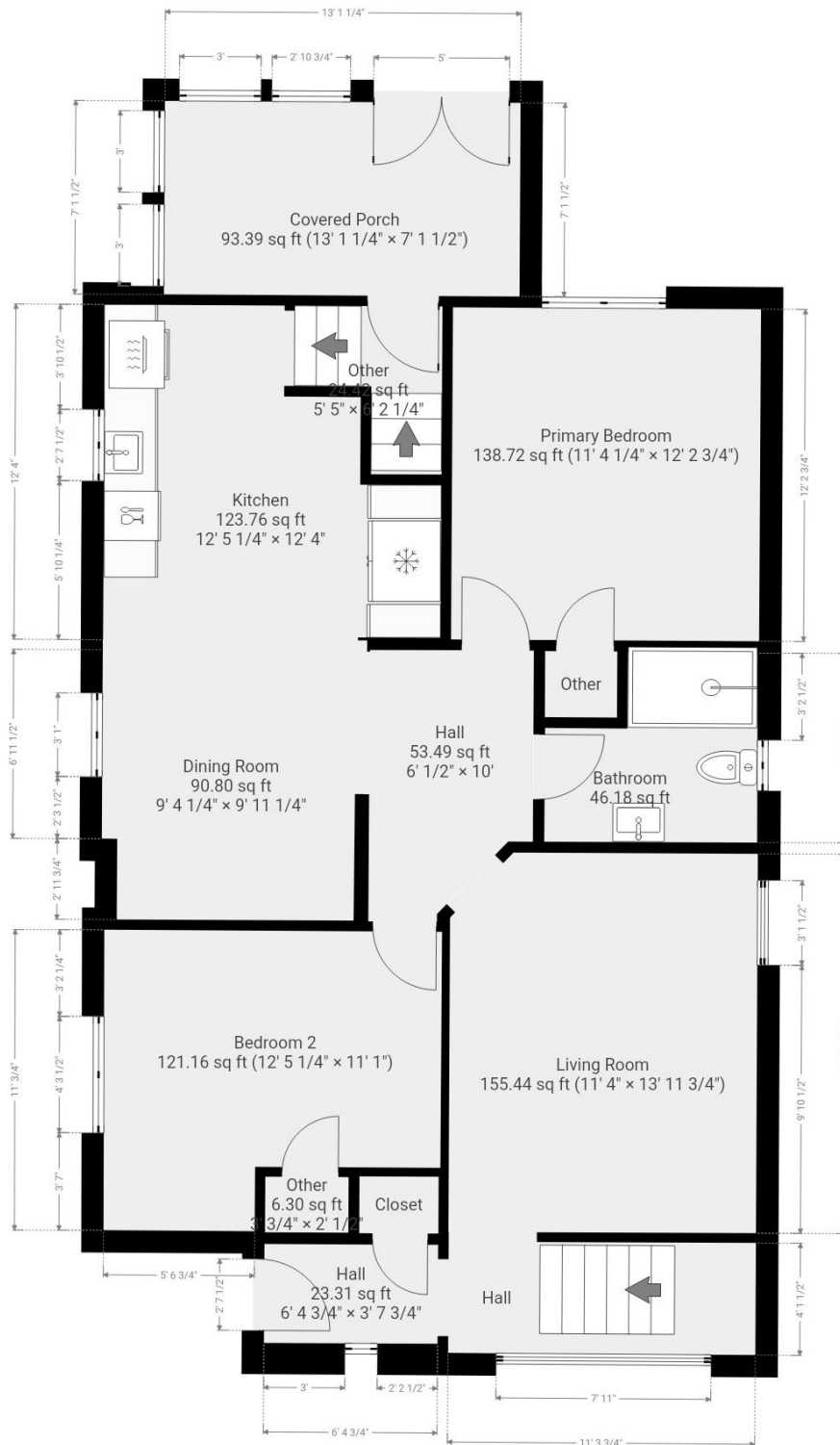
Approx Exterior Area (basement included) = 2380.65 ft²

1st Floor
(above grade)



Approx Interior Area = 902.78 ft²

Approx Exterior Area = 1021.38 ft²



134 Craigroyston Rd
Hamilton, ON

Total Above Grade Exterior ft²

Approx Above Ground Exterior Area = 1408.26 ft²

Total Exterior ft²

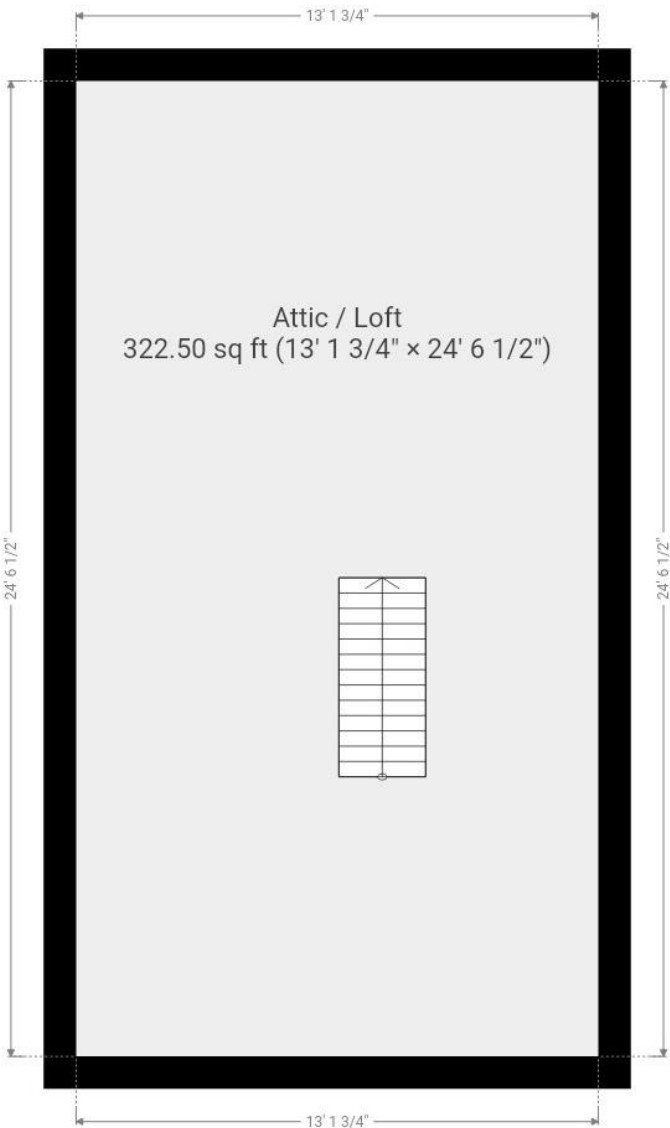
Approx Exterior Area (basement included) = 2380.65 ft²

2nd Floor
(above grade)



Approx Interior Area = 322.38 ft²

Approx Exterior Area = 386.88 ft²



134 Craigroyston Rd
Hamilton, ON

Total Above Grade Exterior ft²

Approx Above Ground Exterior Area = 1408.26 ft²

Total Exterior ft²

Approx Exterior Area (basement included) = 2380.65 ft²

Basement
(below grade)



Approx Interior Area = 866.19 ft²

Approx Exterior Area = 972.39 ft²

